

# 929397

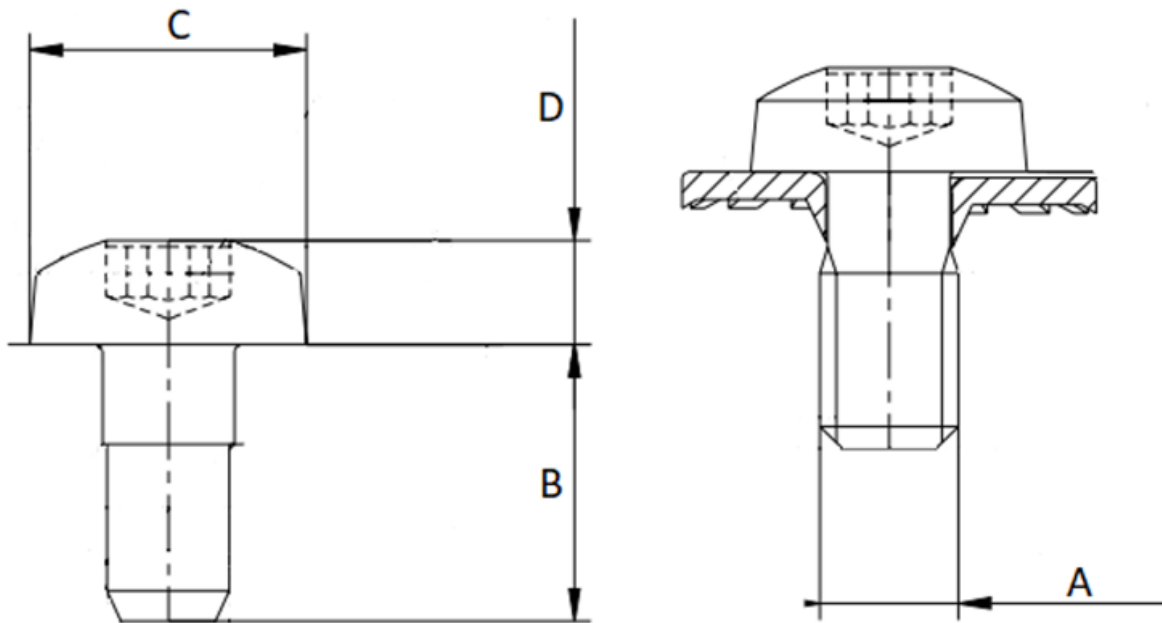
For more information about this assembly solution,

please contact us at the e-mail address below:

[fastenerlisi@lisi-group.com](mailto:fastenerlisi@lisi-group.com)



Part print



**Categories:** Applications Screws, Metric special screws M4 & M5, Our Products

**Product Short Description :**

---

Our « Metric special screws » family has been designed to ensure secure fastening over time for all automotive assembly challenges.

This family includes a complete range of products: in 10.9 and 8.8 steels, aluminum and EGH, etc.

Economical and reliable, alone or in combination with our other products, our metric special screws guarantee an optimal fastening system.

---

**Additional Information:**

- Dimensions: N/A
- Weight: N/A
- Drive: internal hexalobular
- Ø Final [A] (mm): 4
- Final length [B] (mm): 18
- Ø Head [C] (mm): 7.2
- Head Height [D] (mm): 4
- Headshape: panhead
- Property class: 10.9
- Thread type: metric thread
- Washer: flat washer

For more information about this assembly solution,

please contact us at the e-mail address below:

[fastenerlisi@lisi-group.com](mailto:fastenerlisi@lisi-group.com)

