

505472

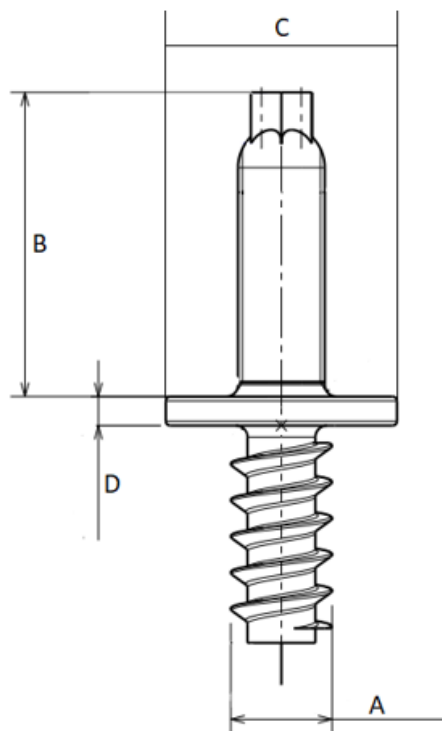
For more information about this assembly solution,

please contact us at the e-mail address below:

fastenerlisi@lisi-group.com



Part print



Categories: Innovative products

Product Short Description :

Our « Metric Plastic Studs » family has been designed to ensure secure fastening over time for all automotive assembly challenges.

This family includes a complete range of products: in 10.9 and 8.8 steels, aluminum and EGH, etc.

Economical and reliable, alone or in combination with our other products, our metric plastic studs guarantee an optimal fastening system.

Additional Information:

- Dimensions: N/A
- Weight: N/A
- Drive screw: external hexalobular
- Ø Final [A] (mm): 6
- Final length [B] (mm): 21
- Ø Head [C] (mm): 16.5
- Head Height [D] (mm): 1
- Headshape: center collar
- Point screw: External hexalobular
- Product type: Metric Plastic Studs
- Property class: 10.9
- Surface Treatment: /
- Thread type: thread for plastic
- Washer screw: no washer

For more information about this assembly solution,

please contact us at the e-mail address below:

fastenerlisi@lisi-group.com

