

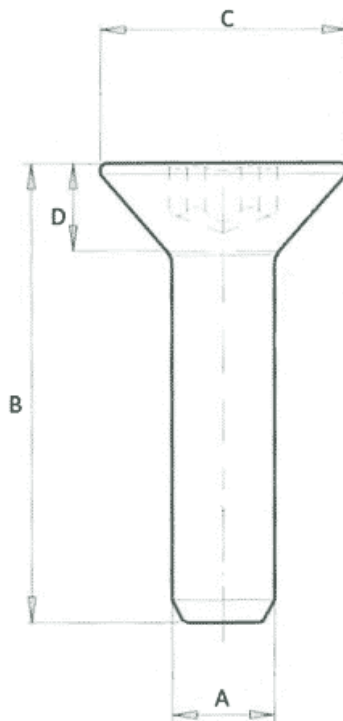
# 503967

For more information about this assembly solution,

please contact us at the e-mail address below:

[fastenerlisi@lisi-group.com](mailto:fastenerlisi@lisi-group.com)

Part print



**Categories:** Applications Screws, Metric special screws M4 & M5, Metric special screws M6, Our Products

## Product Short Description :

---

Our « Metric special screws » family has been designed to ensure secure fastening over time for all automotive assembly challenges.

This family includes a complete range of products: in 10.9 and 8.8 steels, aluminum and

EGH, etc.

Economical and reliable, alone or in combination with our other products, our metric special screws guarantee an optimal fastening system.

---

**Additional Information:**

- Dimensions: N/A
- Weight: N/A
- Drive: internal hexalobular
- Ø Final [A] (mm): 5
- Final length [B] (mm): 16
- Ø Head [C] (mm): 9.3
- Headshape: countersunk
- Property class: 8.8
- Thread type: self-tapping thread
- Washer: no washer

For more information about this assembly solution,

please contact us at the e-mail address below:

[fastenerlisi@lisi-group.com](mailto:fastenerlisi@lisi-group.com)

