

# 933920



---

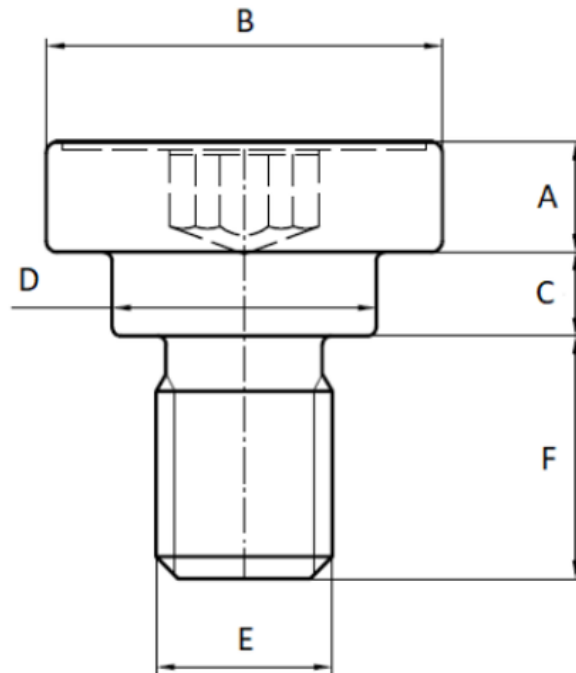
Our « Anti Creep shoulder screws » family has been designed to reinforce clearance holes in plastics to provide a metal to metal contact allowing the application of clamping forces and limit the compression to avoid over-stressing of the plastic.

This family includes a complete range of various products : in steel 10.9, steel 8.8, aluminum and EGH, etc.

In addition to allowing a durable and safe assembly, our anti-creep shoulder screws solutions have advantageous characteristics such as the stability of the preload under flexible assembly conditions, the speed of assembly thanks to the pre-assembly system, etc.

---

Part print



**Price:** 0.00€

For more information about this assembly solution,

please contact us at the e-mail address below:

[fastenerlisi@lisi-group.com](mailto:fastenerlisi@lisi-group.com)



---

# 934516



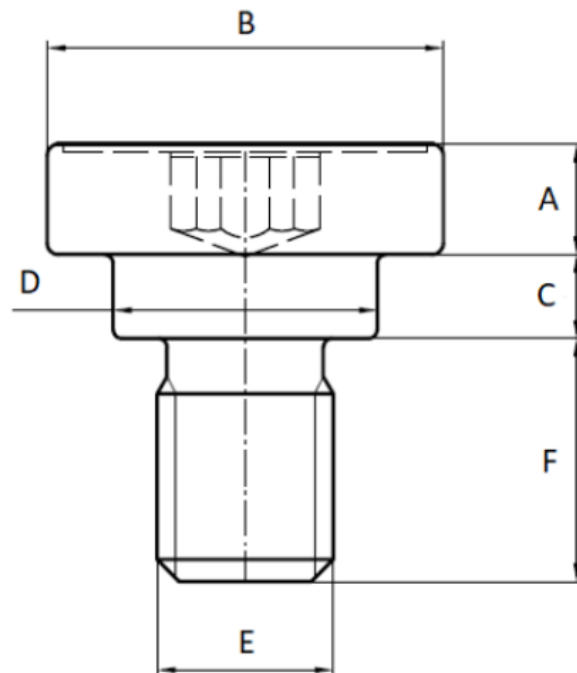
Our « Anti Creep shoulder screws » family has been designed to reinforce clearance holes in plastics to provide a metal to metal contact allowing the application of clamping forces and limit the compression to avoid over-stressing of the plastic.

This family includes a complete range of various products : in steel 10.9, steel 8.8, aluminum and EGH, etc.

In addition to allowing a durable and safe assembly, our anti-creep shoulder screws solutions have advantageous characteristics such as the stability of the preload under flexible assembly conditions, the speed of assembly thanks to the pre-assembly system, etc.

---

Part print



**Price:** 0.00€

For more information about this assembly solution,

please contact us at the e-mail address below:

[fastenerlisi@lisi-group.com](mailto:fastenerlisi@lisi-group.com)



---

# 934745



---

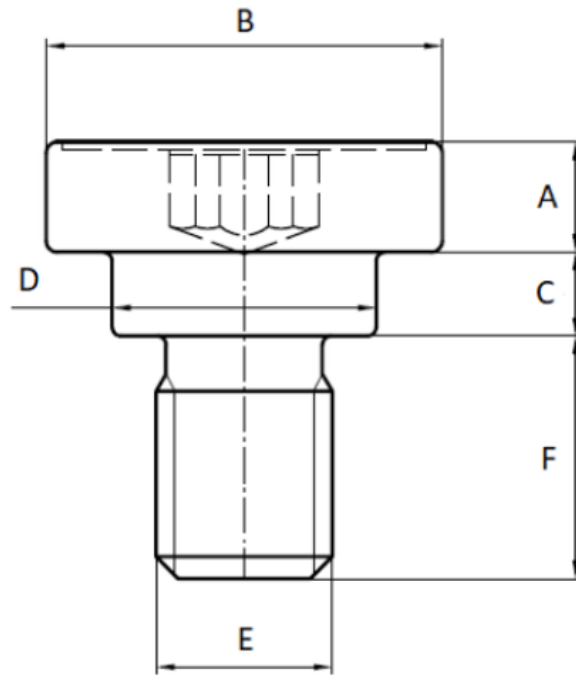
Our « Anti Creep shoulder screws » family has been designed to reinforce clearance holes in plastics to provide a metal to metal contact allowing the application of clamping forces and limit the compression to avoid over-stressing of the plastic.

This family includes a complete range of various products : in steel 10.9, steel 8.8, aluminum and EGH, etc.

In addition to allowing a durable and safe assembly, our anti-creep shoulder screws solutions have advantageous characteristics such as the stability of the preload under flexible assembly conditions, the speed of assembly thanks to the pre-assembly system, etc.

---

Part print



**Price:** 0.00€

For more information about this assembly solution,

please contact us at the e-mail address below:

[fastenerlisi@lisi-group.com](mailto:fastenerlisi@lisi-group.com)



---

# 934829



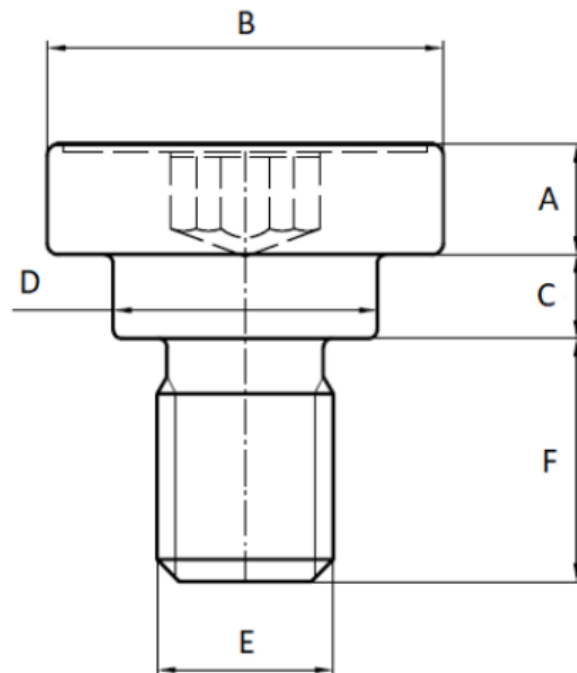
Our « Anti Creep shoulder screws » family has been designed to reinforce clearance holes in plastics to provide a metal to metal contact allowing the application of clamping forces and limit the compression to avoid over-stressing of the plastic.

This family includes a complete range of various products : in steel 10.9, steel 8.8, aluminum and EGH, etc.

In addition to allowing a durable and safe assembly, our anti-creep shoulder screws solutions have advantageous characteristics such as the stability of the preload under flexible assembly conditions, the speed of assembly thanks to the pre-assembly system, etc.

---

Part print



**Price:** 0.00€

For more information about this assembly solution,

please contact us at the e-mail address below:

[fastenerlisi@lisi-group.com](mailto:fastenerlisi@lisi-group.com)



---

# 935120

---

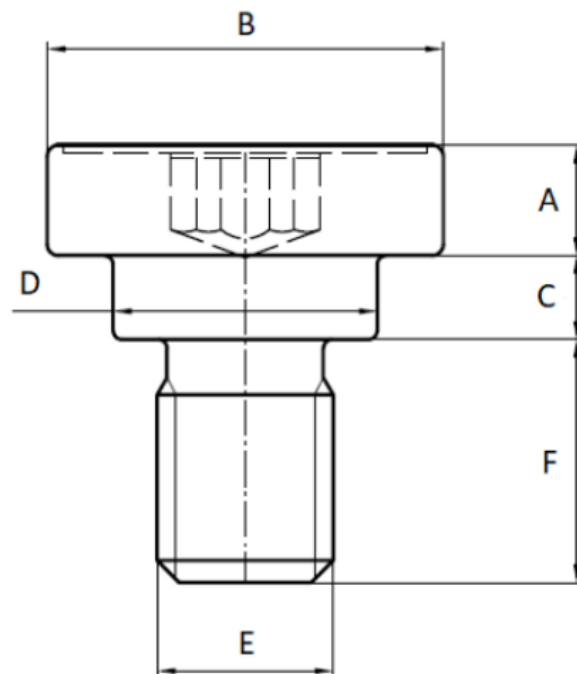
Our « Anti Creep shoulder screws » family has been designed to reinforce clearance holes in plastics to provide a metal to metal contact allowing the application of clamping forces and limit the compression to avoid over-stressing of the plastic.

This family includes a complete range of various products : in steel 10.9, steel 8.8, aluminum and EGH, etc.

In addition to allowing a durable and safe assembly, our anti-creep shoulder screws solutions have advantageous characteristics such as the stability of the preload under flexible assembly conditions, the speed of assembly thanks to the pre-assembly system, etc.

---

Part print



**Price:** 0.00€

For more information about this assembly solution,

please contact us at the e-mail address below:

[fastenerlisi@lisi-group.com](mailto:fastenerlisi@lisi-group.com)

---

# 935419



---

Our « Anti Creep shoulder screws » family has been designed to reinforce clearance holes in plastics to provide a metal to metal contact allowing the application of clamping forces and limit the compression to avoid over-stressing of the plastic.

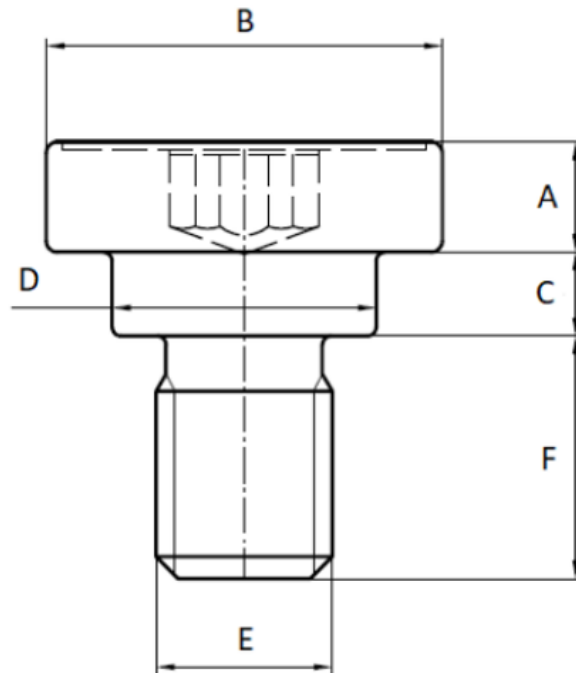
This family includes a complete range of various products : in steel 10.9, steel 8.8, aluminum and EGH, etc.

In addition to allowing a durable and safe assembly, our anti-creep shoulder screws solutions have advantageous characteristics such as the stability of the preload under flexible assembly conditions, the speed of assembly thanks to the pre-assembly system, etc.

---

Part print





**Price:** 0.00€

For more information about this assembly solution,

please contact us at the e-mail address below:

[fastenerlisi@lisi-group.com](mailto:fastenerlisi@lisi-group.com)



---

# 935612

Our « Anti Creep shoulder screws » family has been designed to reinforce clearance holes in plastics to provide a metal to metal contact allowing the application of clamping forces and limit the compression to avoid over-stressing of the plastic.

This family includes a complete range of various products : in steel 10.9, steel 8.8, aluminum and EGH, etc.

In addition to allowing a durable and safe assembly, our anti-creep shoulder screws solutions have advantageous characteristics such as the stability of the preload under flexible assembly conditions, the speed of assembly thanks to the pre-assembly system, etc.

---

**Price:** 0.00€

For more information about this assembly solution,

please contact us at the e-mail address below:

[fastenerlisi@lisi-group.com](mailto:fastenerlisi@lisi-group.com)



---

# 935660



---

Our « Anti Creep shoulder screws » family has been designed to reinforce clearance holes in plastics to provide a metal to metal contact allowing the application of clamping forces and limit the compression to avoid over-stressing of the plastic.

This family includes a complete range of various products : in steel 10.9, steel 8.8, aluminum and EGH, etc.

In addition to allowing a durable and safe assembly, our anti-creep shoulder screws solutions have advantageous characteristics such as the stability of the preload under flexible assembly conditions, the speed of assembly thanks to the pre-assembly system,

etc.

---

**Price:** 0.00€

For more information about this assembly solution,

please contact us at the e-mail address below:

[fastenerlisi@lisi-group.com](mailto:fastenerlisi@lisi-group.com)



---

# 935859



---

Our « Anti Creep shoulder screws » family has been designed to reinforce clearance holes in plastics to provide a metal to metal contact allowing the application of clamping forces and limit the compression to avoid over-stressing of the plastic.

This family includes a complete range of various products : in steel 10.9, steel 8.8, aluminum and EGH, etc.

In addition to allowing a durable and safe assembly, our anti-creep shoulder screws solutions have advantageous characteristics such as the stability of the preload under flexible assembly conditions, the speed of assembly thanks to the pre-assembly system, etc.

---

**Price:** 0.00€

For more information about this assembly solution,

please contact us at the e-mail address below:

[fastenerlisi@lisi-group.com](mailto:fastenerlisi@lisi-group.com)



---

# 936351



---

Our « Anti Creep shoulder screws » family has been designed to reinforce clearance holes in plastics to provide a metal to metal contact allowing the application of clamping forces and limit the compression to avoid over-stressing of the plastic.

This family includes a complete range of various products : in steel 10.9, steel 8.8, aluminum and EGH, etc.

In addition to allowing a durable and safe assembly, our anti-creep shoulder screws solutions have advantageous characteristics such as the stability of the preload under flexible assembly conditions, the speed of assembly thanks to the pre-assembly system, etc.

---

**Price:** 0.00€

For more information about this assembly solution,

please contact us at the e-mail address below:

[fastenerlisi@lisi-group.com](mailto:fastenerlisi@lisi-group.com)

---

# 936356

-----  
Our « Anti Creep shoulder screws » family has been designed to reinforce clearance holes in plastics to provide a metal to metal contact allowing the application of clamping forces and limit the compression to avoid over-stressing of the plastic.

This family includes a complete range of various products : in steel 10.9, steel 8.8, aluminum and EGH, etc.

In addition to allowing a durable and safe assembly, our anti-creep shoulder screws solutions have advantageous characteristics such as the stability of the preload under flexible assembly conditions, the speed of assembly thanks to the pre-assembly system, etc.

-----

**Price:** 0.00€

For more information about this assembly solution,

please contact us at the e-mail address below:

[fastenerlisi@lisi-group.com](mailto:fastenerlisi@lisi-group.com)

# 936526



---

Our « Anti Creep shoulder screws » family has been designed to reinforce clearance holes in plastics to provide a metal to metal contact allowing the application of clamping forces and limit the compression to avoid over-stressing of the plastic.

This family includes a complete range of various products : in steel 10.9, steel 8.8, aluminum and EGH, etc.

In addition to allowing a durable and safe assembly, our anti-creep shoulder screws solutions have advantageous characteristics such as the stability of the preload under flexible assembly conditions, the speed of assembly thanks to the pre-assembly system, etc.

---

**Price:** 0.00€

For more information about this assembly solution,

please contact us at the e-mail address below:

[fastenerlisi@lisi-group.com](mailto:fastenerlisi@lisi-group.com)



# 937543



---

Our « Anti Creep shoulder screws » family has been designed to reinforce clearance holes in plastics to provide a metal to metal contact allowing the application of clamping forces and limit the compression to avoid over-stressing of the plastic.

This family includes a complete range of various products : in steel 10.9, steel 8.8, aluminum and EGH, etc.

In addition to allowing a durable and safe assembly, our anti-creep shoulder screws solutions have advantageous characteristics such as the stability of the preload under flexible assembly conditions, the speed of assembly thanks to the pre-assembly system, etc.

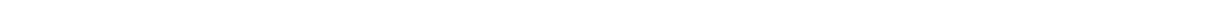
---

**Price:** 0.00€

For more information about this assembly solution,

please contact us at the e-mail address below:

[fastenerlisi@lisi-group.com](mailto:fastenerlisi@lisi-group.com)



# 937645



---

Our « Anti Creep shoulder screws » family has been designed to reinforce clearance holes in plastics to provide a metal to metal contact allowing the application of clamping forces and limit the compression to avoid over-stressing of the plastic.

This family includes a complete range of various products : in steel 10.9, steel 8.8, aluminum and EGH, etc.

In addition to allowing a durable and safe assembly, our anti-creep shoulder screws solutions have advantageous characteristics such as the stability of the preload under flexible assembly conditions, the speed of assembly thanks to the pre-assembly system, etc.

---

**Price:** 0.00€

For more information about this assembly solution,

please contact us at the e-mail address below:

[fastenerlisi@lisi-group.com](mailto:fastenerlisi@lisi-group.com)





# 937930



---

Our « Anti Creep shoulder screws » family has been designed to reinforce clearance holes in plastics to provide a metal to metal contact allowing the application of clamping forces and limit the compression to avoid over-stressing of the plastic.

This family includes a complete range of various products : in steel 10.9, steel 8.8, aluminum and EGH, etc.

In addition to allowing a durable and safe assembly, our anti-creep shoulder screws solutions have advantageous characteristics such as the stability of the preload under flexible assembly conditions, the speed of assembly thanks to the pre-assembly system, etc.

---

**Price:** 0.00€

For more information about this assembly solution,

please contact us at the e-mail address below:

[fastenerlisi@lisi-group.com](mailto:fastenerlisi@lisi-group.com)

