

# 934829



---

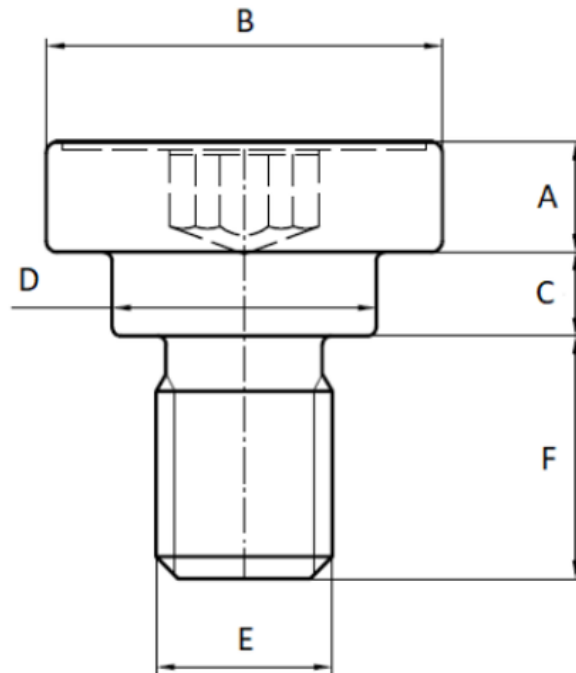
Our « Anti Creep shoulder screws » family has been designed to reinforce clearance holes in plastics to provide a metal to metal contact allowing the application of clamping forces and limit the compression to avoid over-stressing of the plastic.

This family includes a complete range of various products : in steel 10.9, steel 8.8, aluminum and EGH, etc.

In addition to allowing a durable and safe assembly, our anti-creep shoulder screws solutions have advantageous characteristics such as the stability of the preload under flexible assembly conditions, the speed of assembly thanks to the pre-assembly system, etc.

---

Part print



**Price:** 0.00€

For more information about this assembly solution,

please contact us at the e-mail address below:

[fastenerlisi@lisi-group.com](mailto:fastenerlisi@lisi-group.com)



---

# 936369

---

Our « Anti Creep shoulder screws » family has been designed to reinforce clearance holes in plastics to provide a metal to metal contact allowing the application of clamping forces and limit the compression to avoid over-stressing of the plastic.

This family includes a complete range of various products : in steel 10.9, steel 8.8, aluminum and EGH, etc.

In addition to allowing a durable and safe assembly, our anti-creep shoulder screws solutions have advantageous characteristics such as the stability of the preload under flexible assembly conditions, the speed of assembly thanks to the pre-assembly system, etc.

---

**Price:** 0.00€

For more information about this assembly solution,

please contact us at the e-mail address below:

[fastenerlisi@lisi-group.com](mailto:fastenerlisi@lisi-group.com)



---

# CB8991



---

Our « elastic anti-creep rings » family has been designed to reinforce clearance holes in plastics to provide a metal to metal contact allowing the application of clamping forces and limit the compression to avoid over-stressing of the plastic.

This family includes different forms such as round and oblong products.

In addition to allowing a durable and safe assembly, our « elastic anti-creep rings » solutions have advantageous characteristics such as the ability to be used on different panel thicknesses, on different hole diameters, etc.

---

For more information about this assembly solution,

please contact us at the e-mail address below:

[fastenerlisi@lisi-group.com](mailto:fastenerlisi@lisi-group.com)



---

# CBB8874



---

Our « elastic anti-creep rings » family has been designed to reinforce clearance holes in plastics to provide a metal to metal contact allowing the application of clamping forces and limit the compression to avoid over-stressing of the plastic.

This family includes different forms such as round and oblong products.

In addition to allowing a durable and safe assembly, our « elastic anti-creep rings » solutions have advantageous characteristics such as the ability to be used on different panel thicknesses, on different hole diameters, etc.

---

For more information about this assembly solution,

please contact us at the e-mail address below:

---

# CBB8923



---

Our « elastic anti-creep rings » family has been designed to reinforce clearance holes in plastics to provide a metal to metal contact allowing the application of clamping forces and limit the compression to avoid over-stressing of the plastic.

This family includes different forms such as round and oblong products.

In addition to allowing a durable and safe assembly, our « elastic anti-creep rings » solutions have advantageous characteristics such as the ability to be used on different panel thicknesses, on different hole diameters, etc.

---

For more information about this assembly solution,

please contact us at the e-mail address below:

fastenerlisi@lisi-group.com

---

---

# PRD05047



---

Our « elastic anti-creep rings » family has been designed to reinforce clearance holes in plastics to provide a metal to metal contact allowing the application of clamping forces and limit the compression to avoid over-stressing of the plastic.

This family includes different forms such as round and oblong products.

In addition to allowing a durable and safe assembly, our « elastic anti-creep rings » solutions have advantageous characteristics such as the ability to be used on different panel thicknesses, on different hole diameters, etc.

---

For more information about this assembly solution,

please contact us at the e-mail address below:

[fastenerlisi@lisi-group.com](mailto:fastenerlisi@lisi-group.com)

