

505899

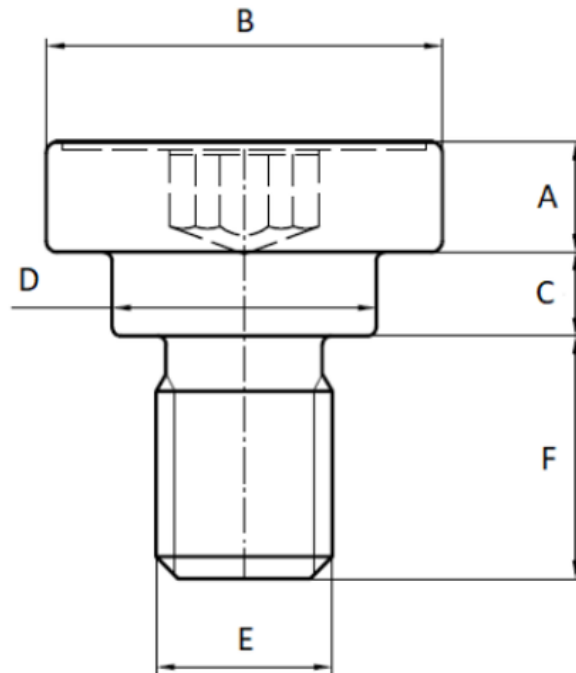


Our « Anti Creep shoulder screws » family has been designed to reinforce clearance holes in plastics to provide a metal to metal contact allowing the application of clamping forces and limit the compression to avoid over-stressing of the plastic.

This family includes a complete range of various products : in steel 10.9, steel 8.8, aluminum and EGH, etc.

In addition to allowing a durable and safe assembly, our anti-creep shoulder screws solutions have advantageous characteristics such as the stability of the preload under flexible assembly conditions, the speed of assembly thanks to the pre-assembly system, etc.

Part print



Price: 0.00€

For more information about this assembly solution,

please contact us at the e-mail address below:

fastenerlisi@lisi-group.com



938325



Our « Anti Creep shoulder screws » family has been designed to reinforce clearance holes in plastics to provide a metal to metal contact allowing the application of clamping forces and limit the compression to avoid over-stressing of the plastic.

This family includes a complete range of various products : in steel 10.9, steel 8.8, aluminum and EGH, etc.

In addition to allowing a durable and safe assembly, our anti-creep shoulder screws solutions have advantageous characteristics such as the stability of the preload under flexible assembly conditions, the speed of assembly thanks to the pre-assembly system, etc.

Price: 0.00€

For more information about this assembly solution,

please contact us at the e-mail address below:

fastenerlisi@lisi-group.com

